

**Newton Cap Bank, DL14 7PX**  
**2 Bed - House - Mid Terrace**  
**Starting Bid £55,000**

**ROBINSONS**  
SALES • LETTINGS • AUCTIONS • SURVEYS

For sale by modern auction, guide price £55,000 plus reservation fee.

Robinsons are delighted to offer to the sales market, with the benefit of NO FORWARD CHAIN this two bedroom mid terrace house with rear garden and delightful views. The house is warmed by an gas combination boiler which was fitted in November 2025 and the windows and UPVC double glazed.

The internal accommodation comprises, entrance vestibule, lounge with window to the front aspect. Inner hallway with staircase to the first floor landing with understairs storage space. Bathroom with three piece suite, kitchen with views over the rear garden. Rear hallway then gives access to the rear.

To the first floor there there are two double bedrooms.

Outside there is a yard and garden directly to the rear with pleasant views.

Newton Cap Bank is conveniently positioned in Bishop Auckland being within walking distance of the town centre and bus links.

Contact Robinsons for further information and to arrange an internal viewing.

### Modern Auction

#### Auctioneer Comments

This property is for sale by the Modern Method of Auction. Should you view, offer or bid on the property, your information will be shared with the Auctioneer, iamsold Limited.

This method of auction requires both parties to complete the transaction within 56 days of the draft contract for sale being received by the buyer's solicitor. This additional time allows buyers to proceed with mortgage finance.

The buyer is required to sign a reservation agreement and make payment of a non-refundable Reservation Fee. This being 4.5% of the purchase price including VAT, subject to a minimum of £6,600.00 including VAT. The Reservation Fee is paid in addition to purchase price and will be considered as part of the chargeable consideration for the property in the calculation for stamp duty liability. Buyers will be required to go through an identification verification process with iamsold and provide proof of how the purchase would be funded.

This property has a Buyer Information Pack which is a collection of documents in relation to the property. The documents may not tell you everything you need to know about the property, so you are required to complete your own due diligence before bidding. A sample copy of the Reservation Agreement and terms and conditions are also contained within this pack. The buyer will also make payment of £300 including VAT towards the preparation cost of the pack, where it has been provided by iamsold.

The property is subject to an undisclosed Reserve Price with both the Reserve Price and Starting Bid being subject to change.

#### Referral Arrangements

The Partner Agent and Auctioneer may recommend the services of third parties to you. Whilst these services are recommended as it is believed they will be of benefit; you are under no obligation to use any of these services and you should always consider your options before services are accepted. Where services are accepted the Auctioneer or Partner Agent

may receive payment for the recommendation and you will be informed of any referral arrangement and payment prior to any services being taken by you.

### Agent Notes

Council Tax: Durham County Council, Band A Approx.£1748.00

Tenure: Freehold

Property Construction – Standard,

Number & Types of Rooms – Please refer to the details and floorplan, all measurements are for guidance only

Electricity supply – Mains

Water Supply – Mains

Sewerage – Mains

Heating – Gas

Estimated Mobile phone coverage – Please refer to the Ofcom Website - <https://www.ofcom.org.uk>

Estimated Broadband Download speeds – please refer to the Ofcom Website – <https://www.ofcom.org.uk>

Building Safety – The Vendor is not aware of any Building Safety issues. However, we would recommend that the purchaser engages the services of a chartered surveyor to confirm.

Restrictions – covenants which affect the property are within the Land Registry Title Register which is available for inspection.

Selective licencing area – YES

Probate – n/a

Rights & Easements – review auction pack

Flood risk – refer to the Gov website - <https://www.gov.uk/check-long-term-flood-risk>

Coastal Erosion – refer to the Gov website - <https://www.gov.uk/check-coastal-erosion-management-in-your-area>

Protected Trees – no

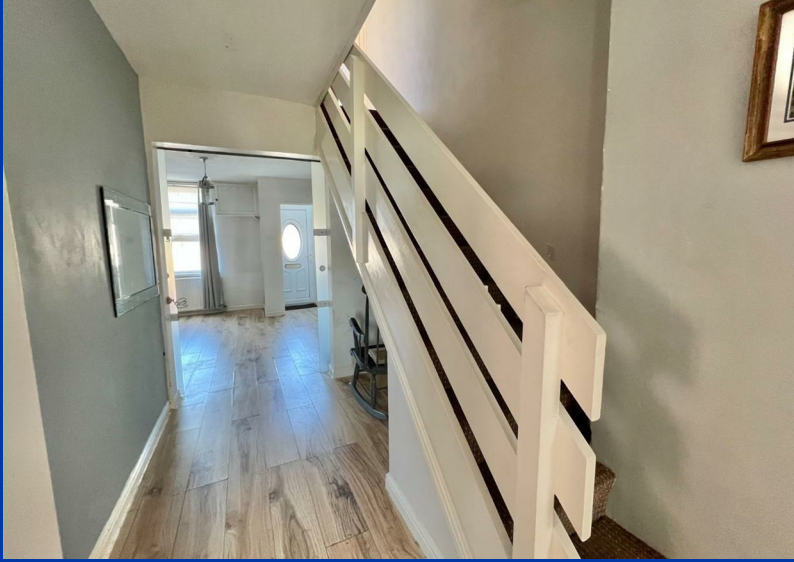
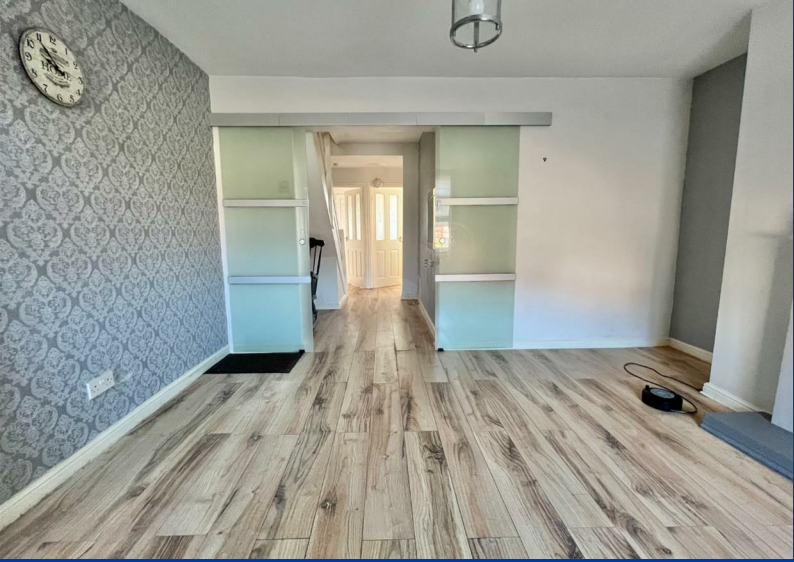
Planning Permission – Nothing in the local area to affect this property that we are aware of. Check with seller.

Accessibility/Adaptations – no

Mining Area – Coal Mining Reporting Area, further searches may be required by your legal representative.

Disclaimer: Our details have been compiled in good faith using publicly available sources and information obtained from the vendor prior to marketing. Verification and clarification of this information, along with any further details concerning Material Information parts A, B & C, should be sought from a legal representative or appropriate authorities before making any financial commitments. Robinsons cannot accept liability for any information provided subsequent amendments or unintentional errors or omissions.

HMRC Compliance requires all estate agents to carry out identity checks on their customers, including buyers once their offer has been accepted. These checks must be completed for each purchaser who will become a legal owner of the property. An administration fee of £30 (inc. VAT) per individual purchaser applies for carrying out these checks.



# OUR SERVICES

Mortgage Advice

Conveyancing

Surveys and EPCs

Property Auctions

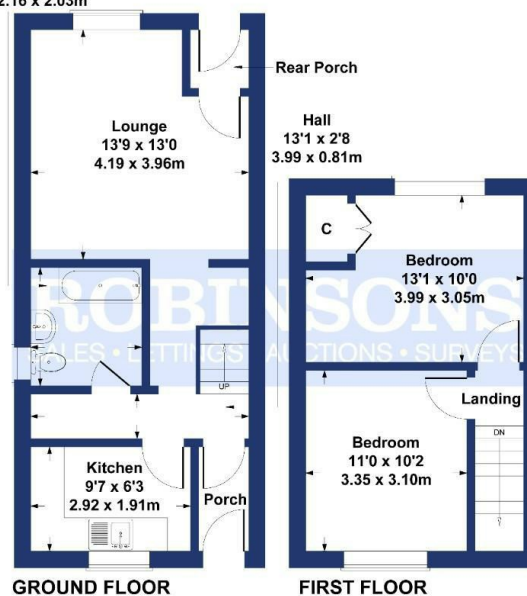
Lettings and Management

Strategic Marketing Plan

Dedicated Property Manager

## Newton Cap Bank Bishop Auckland

Bathroom 7'1 x 6'8  
2.16 x 2.03m  
Approximate Gross Internal Area  
688 sq ft - 64 sq m



GROUND FLOOR

FIRST FLOOR

SKETCH PLAN FOR ILLUSTRATIVE PURPOSES ONLY

All measurements walls, doors, windows, fittings and appliances, their sizes and locations, are approximate only. They cannot be regarded as being a representation by the seller, nor their agent.

Produced by Potterplans Ltd. 2026

Energy Efficiency Rating	
	Potential
Very energy efficient - lower running costs	
(92 plus) <b>A</b>	
(81-91) <b>B</b>	
(69-80) <b>C</b>	
(55-68) <b>D</b>	
(39-54) <b>E</b>	
(21-38) <b>F</b>	
(1-20) <b>G</b>	
Not energy efficient - higher running costs	
EU Directive 2002/91/EC	
<b>England &amp; Wales</b>	

### DURHAM

1-3 Old Elvet  
DH1 3HL

T: 0191 386 2777 (Sales)

T: 0191 383 9994 (option1) (Lettings)

E: info@robinsonsdurham.co.uk

### DURHAM REGIONAL HEAD OFFICE

19A old Elvet  
DH1 3HL

T: 0191 383 0777

E: info@robinsonsdurham.co.uk

### CHESTER-LE-STREET

45 Front Street  
DH3 3BH

T: 0191 387 3000

E: info@robinsonscs.co.uk

### BISHOP AUCKLAND

120 Newgate Street  
DL14 7EH

T: 01388 458111

E: info@robinsonsbishop.co.uk

### CROOK

Royal Corner  
DL15 9UA

T: 01388 763477

E: info@robinsonscrook.co.uk

### SPENNYMOOR

11 Cheapside  
DH16 6QE

T: 01388 420444

E: info@robinsonsspenny Moor.co.uk

### SEDFIELD

3 High Street  
TS21 2AU

T: 01740 621777

E: info@robinsonssedgefield.co.uk

### WYNYARD

The Wynd  
TS22 5QQ

T: 0174 064 5444

E: info@robinsonswyny ard.co.uk

Every care has been taken with the preparation of these particulars, but they are for general guidance only and complete accuracy cannot be guaranteed. If there is any point, which is of particular importance please ask or professional verification should be sought. All dimensions are approximate. The mention of fixtures, fittings &/or appliances does not imply they are in full efficient working order. Photographs are provided for general information and it cannot be inferred that any item shown is included in the sale. These particulars do not constitute a contract or part of a contract.

Robinsons can recommend financial services, surveying and conveyancing services to sellers and buyers. Robinsons staff may benefit from referral incentives relating to these services.



# ROBINSONS

SALES • LETTINGS • AUCTIONS

120 Newgate Street, Bishop Auckland, DL14 7EH | Tel: 01388 458111 | info@robinsonsbishop.co.uk

www.robinsonsestateagents.co.uk